

## Questions on Cells

Q5



a) What is the name of this type of cell?

.....

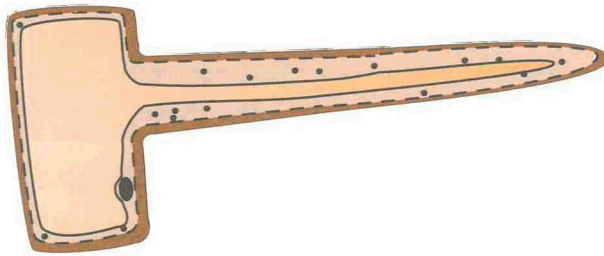
b) What job does it do?

.....

c) Why is it shaped with a dimple inside?

.....

Q6



a) This is a plant cell. What is it called?

.....

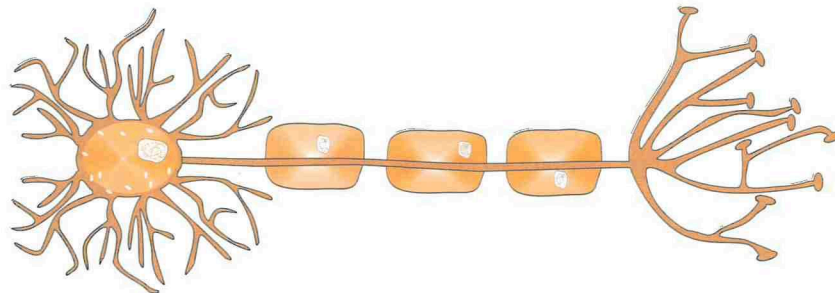
b) What job does it do?

.....

c) Where in the plant would you find this cell?

.....

Q7 This is a nerve cell.



What is the function of the nerve cell?

.....

.....

## Questions on Specialised Cells

**Q1** Match each cell structure with the cell function.

### Cell Structure

An epithelial cell with hairs on its outer membrane surface which waft or beat

Contains the red chemical substance called haemoglobin

Is a cell made with an extension (the tail)

Has a long cell cytoplasm and has many branches at the end / ends

### Function (job)

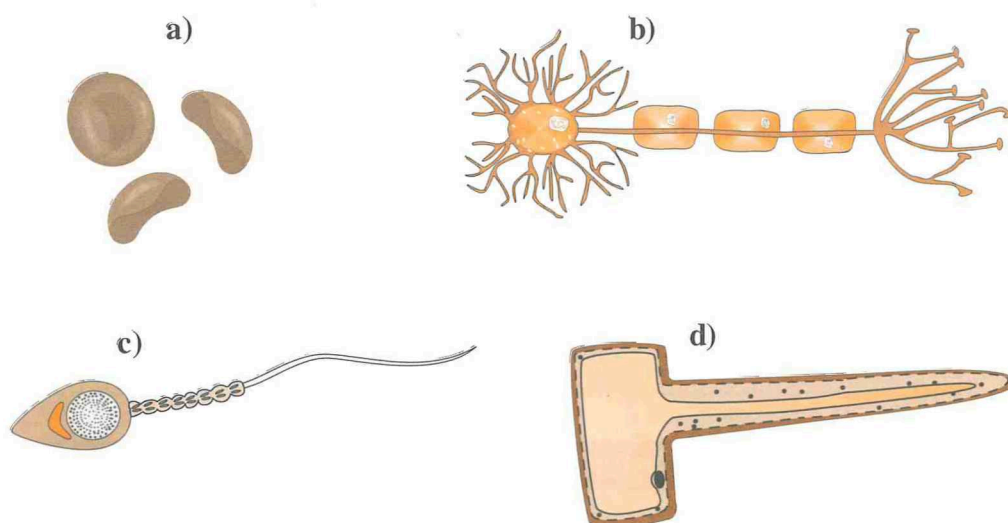
Carries oxygen around the body

Carries information (impulses) round the body and joins other impulses

After a journey it joins with an egg cell

These cells are found in main body tubes like those near the lungs and help to trap germs and dust and clean the air

**Q2** The drawings below ( a ) – ( d ) show a variety of animal and plant cells.



For each cell state :

i) the name (*type*) of cell.

ii) the life process(es) in which it is especially involved.

- a) .....
- b) .....
- c) .....
- d) .....