



BIOLOGY MIND

Edexcel

A-Level

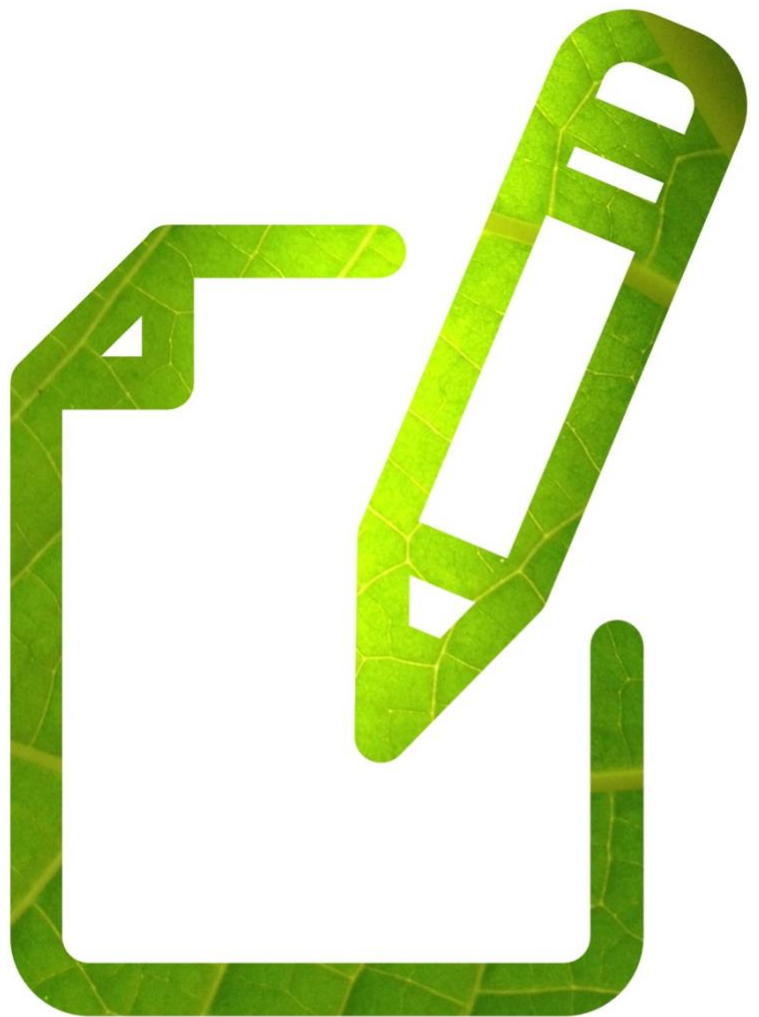
BIOLOGY

Biological Molecules

Water

Time allowed
20 minutes

QUESTION PAPER



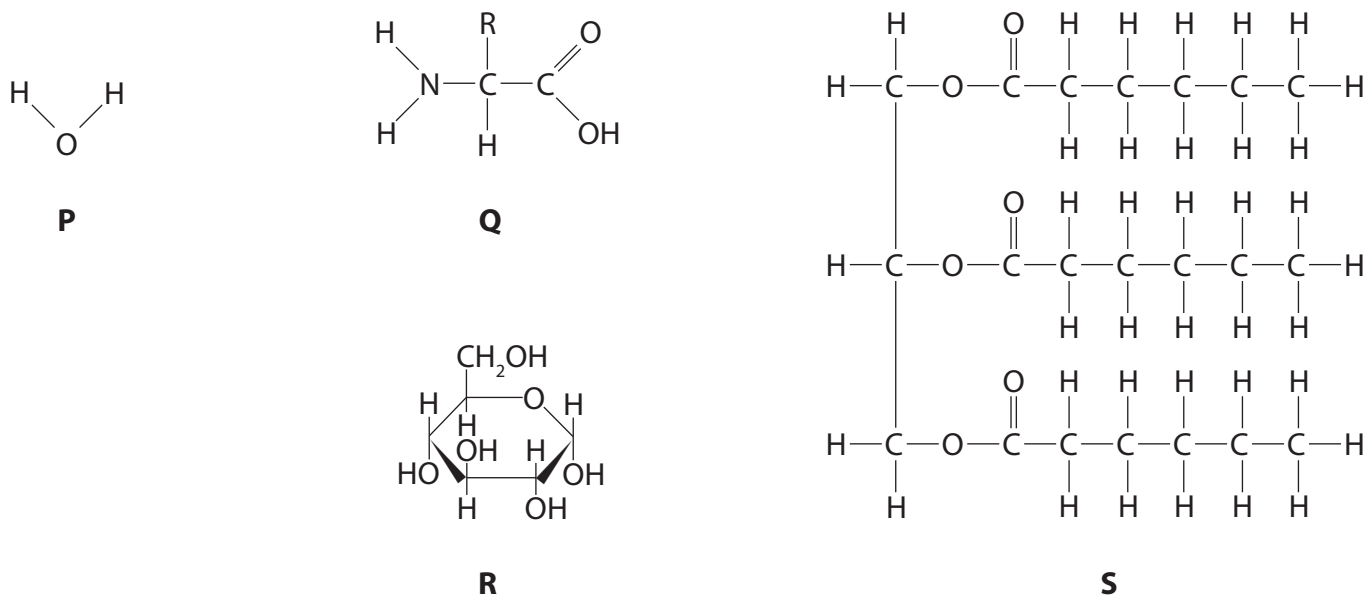
Score

/17

Percentage

%

1 The diagram below shows four molecules, P, Q, R and S, found in living organisms.



(a) Place a cross ☒ in the box to complete each of the following statements.

(i) Two molecules of **P** can be joined together by

(1)

- ☐ **A** a hydrogen bond
- ☐ **B** a hydrophobic interaction
- ☐ **C** an ionic bond
- ☐ **D** a peptide bond

(ii) A condensation reaction between two molecules of **Q** forms

(1)

- ☐ **A** an ester bond
- ☐ **B** a glycosidic bond
- ☐ **C** a hydrogen bond
- ☐ **D** a peptide bond





Water

(iii) Molecule **R** is

(1)

- ☐ **A** a fatty acid
- ☐ **B** an amino acid
- ☐ **C** deoxyribose
- ☐ **D** glucose

(iv) One of the products of the hydrolysis of molecule **S** is

(1)

- ☐ **A** a triglyceride
- ☐ **B** an amino acid
- ☐ **C** glycerol
- ☐ **D** water

(b) Name **one** element found in all molecules of **Q** that would not be found in carbohydrates.

(1)

.....





Water

(c) Draw a diagram to show the molecules produced when **two** molecules of **R** join together during a condensation reaction. (3)

(d) Explain how the dipolar nature of water is essential for living organisms. (2)

.....

.....

.....

.....

.....

.....

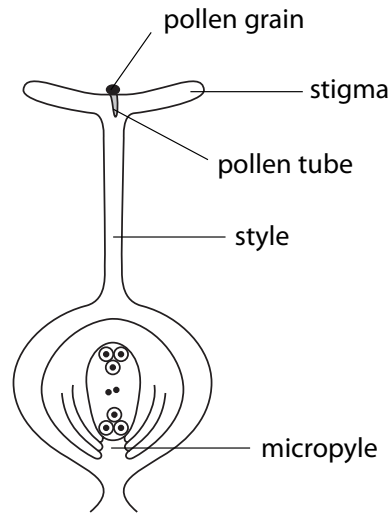
(Total for Question 1 = 10 marks)





- 2 Water is important for many different processes in plants including successful pollen tube growth.

(a) The diagram below shows a pollen grain growing on the stigma of a flower.



- (i) The pollen tube grows from the pollen grain to the micropyle. Suggest **one** stimulus, other than water, that causes the pollen tube to grow towards the micropyle.

(1)

- (ii) The tip of the growing pollen tube releases digestive enzymes into the style. Suggest the role of these digestive enzymes in the growth of the pollen tube.

(3)



(b) Give **three** roles of water in a plant other than for pollen tube growth. (3)

- 1
.....
- 2
.....
- 3
.....

(Total for Question 2 = 7 marks)

