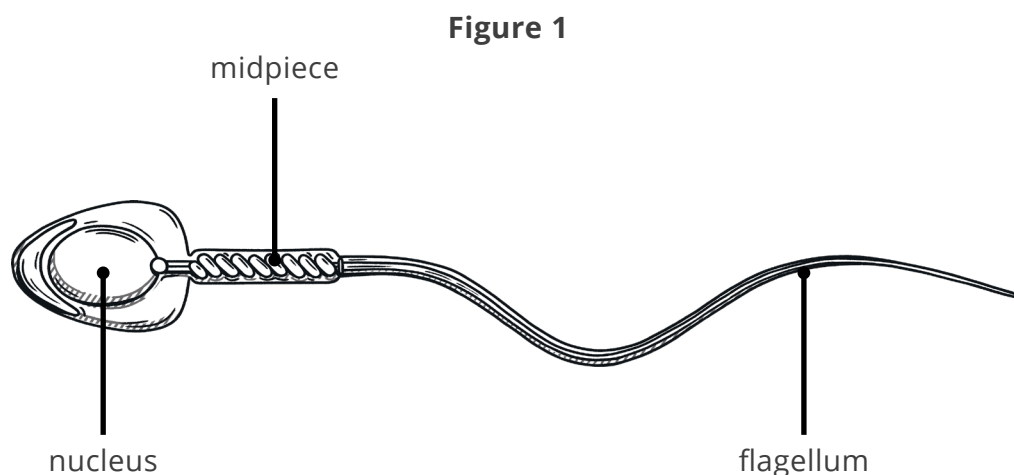


Human Reproduction Practice Exam Questions

0 1

Figure 1 shows a sperm cell.



0 1 . 1

Which part of the sperm cell allows it to move towards an egg cell?

[1 mark]

Tick **one** box.

flagellum ☐

midpiece ☐

nucleus ☐

0 1 . 2

Which part of the sperm cell contains genetic information?

[1 mark]

Tick **one** box.

flagellum ☐

midpiece ☐

nucleus ☐

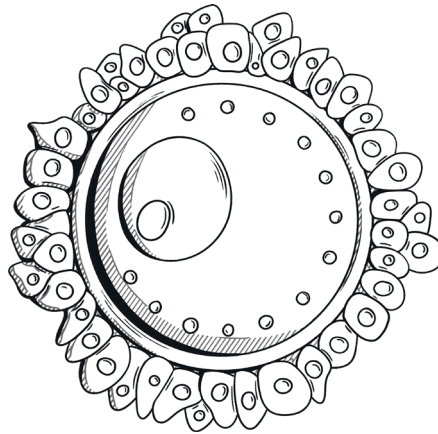
0 1 . 3

The midpiece contains many mitochondria. Explain why having many mitochondria is important to the function of the sperm cell.

[2 marks]

0 1 . 4 **Figure 2** shows an egg cell.

Figure 2

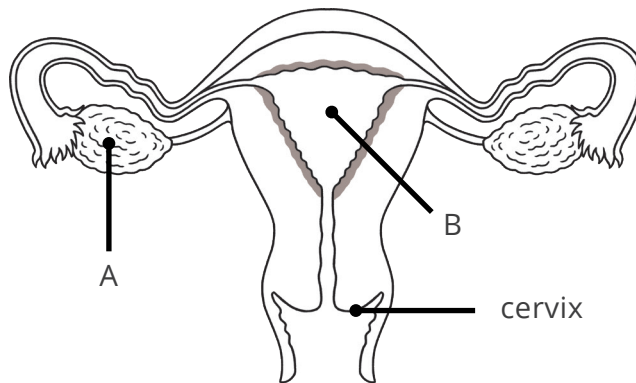


Draw one line from each part of the egg cell to its function.

[2 marks]

Part	Function
cell membrane	Contains genetic information from the mother.
cytoplasm	Contains nutrients to support the developing embryo.
nucleus	Changes after fertilisation so only one sperm cell can enter.

0 2

Figure 3 shows the female reproductive system.**Figure 3**

0 2

. 1

What is the name of part **A**?

[1 mark]

Tick **one** box.ovary ☐oviduct ☐uterus ☐vagina ☐

0 2

. 2

What is the name of part **B**?

[1 mark]

Tick **one** box.ovary ☐oviduct ☐uterus ☐vagina ☐

0 2

. 3

Describe the function of the cervix in the female reproductive system.

[1 mark]

0 2

. 4

Give the approximate day in the menstrual cycle at which the following changes occur. Choose answers from the box.

[2 marks]

1	5	14
---	---	----

Change**Day**

The lining of the uterus starts to break down.

An egg cell is released from the ovary.

An egg cell starts to mature in the ovary.

5

03

Table 1 shows the ages at which ten people started puberty.**Table 1**

Males	Females
12	8
11	11
9	14
14	10
14	12

03.1

What is the mean age at which the males started puberty?

[1 mark]

Tick **one** box.

- 9 ☐
- 11 ☐
- 12 ☐
- 14 ☐

03.2

Give two differences between the ages at which puberty started in males and females.

[2 marks]

1. _____
- _____
2. _____
- _____

03.3

Compare the physical changes that occur during puberty in males and females.

[6 marks]
